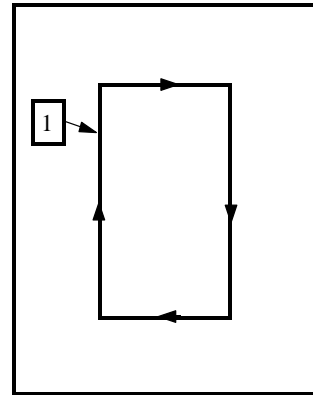
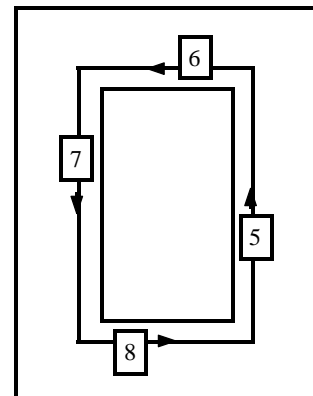


## V-Groove Mats

- 1) Cut the artwork opening from the back of the mat in the normal clockwise direction.
- 2) Adjust the blade depth screw one full turn clockwise, so the blade does not cut through the mat.



- 3) Turn the mat face out.
- 4) Set the borders for the desired position of the v-groove.
- 5) Insert two v-groove stop spacers on the right side and make the right cut moving upward.
- 6) Move the spacers from the right hand side to the top and make the top cut moving to the left.
- 7) Move the spacers from the top to the left and cut the left side moving downward.
- 8) Move the spacers from the left to the bottom and make the bottom cut.



- 9) Remove the v-groove spacers from the bottom.
- 10) Cut the inner bevel of the v-groove in the clockwise direction.
- 11) Return to the normal knife depth setting by turning the knife depth screw one full turn clockwise.

